



GAT MONTHLY MEMBERSHIP PROGRESS REPORT

Results as of: 6/30/2023

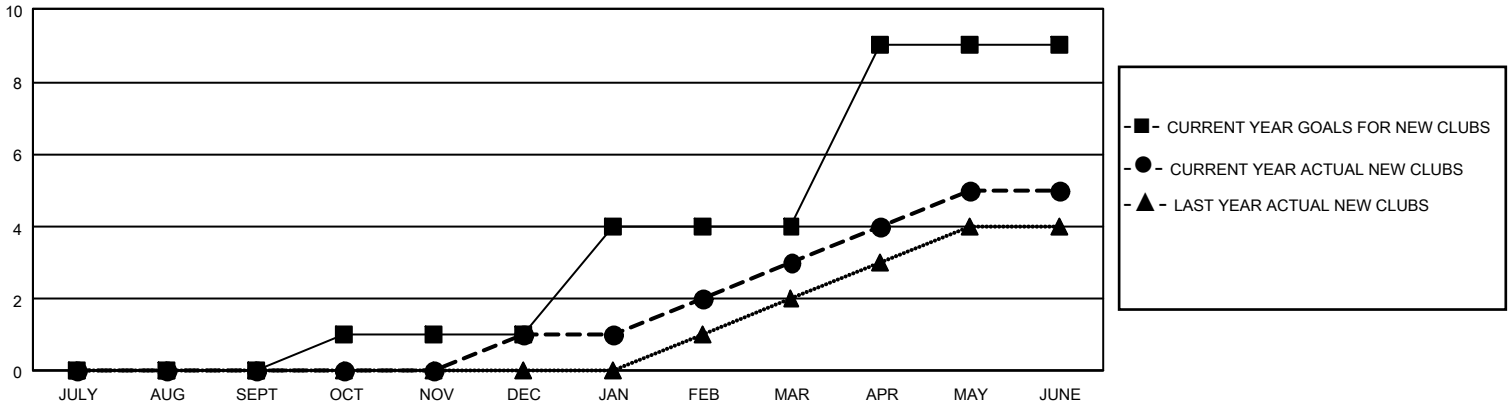
GMT Constitutional Area 5 - J, Group G

REPORT DOES NOT INCLUDE CLUBS IN UNDISTRICTED AREAS.

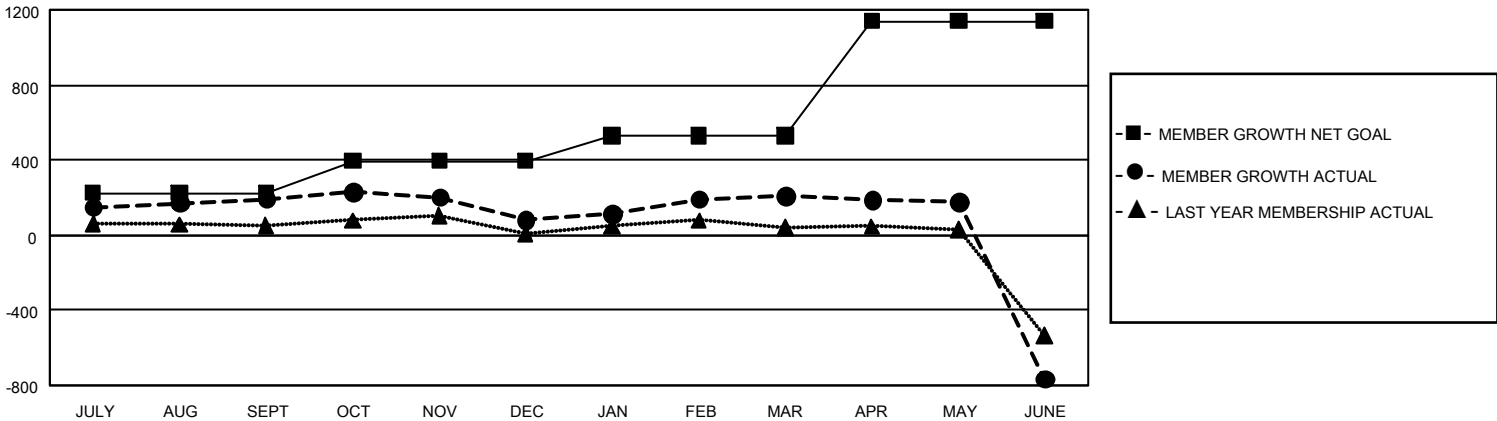
Clubs			
RESULTS FOR 2022-2023			
QUARTER	NEW CLUB GOAL	NEW CLUBS	DROPPED CLUBS
JULY/AUG/SEPT	0	0	3
OCT/NOV/DEC	3	1	3
JAN/FEB/MAR	9	2	2
APR/MAY/JUNE	15	2	16

Members			
RESULTS FOR 2022-2023			
QUARTER	MEMBER GROWTH NET GOAL	MEMBER GROWTH ACTUAL	DROPPED MEMBERS ACTUAL (including transfers)
JULY/AUG/SEPT	225	487	268
OCT/NOV/DEC	170	266	352
JAN/FEB/MAR	136	380	214
APR/MAY/JUNE	610	330	1,250

GOALS AND ACTUAL NEW CLUBS CUMULATIVE



GOALS AND ACTUAL MEMBERS CUMULATIVE



DROPPED CLUBS: 24	388 CLUBS OF 603 ADDED 1 OR MORE NEW MEMBERS	<u>GENDER DISTRIBUTION</u>	
<u>DROPPED MEMBERS</u>		MALE	12,836 (79.21%)
DECEASED	172	FEMALE	3,368 (20.78%)
CLUB CANCELLED	91	NON BINARY	0 (0.00%)
OTHER	1,821	PREFER NOT TO ANSWER	1 (0.01%)
TOTAL	2,084	TOTAL FAMILY UNIT MEMBERS	4,314
	CLICK HERE FOR CUMULATIVE MEMBERSHIP DATA	FAMILY MEMBERS PAYING HALF DUES	2,475